

Join Reiman Gardens' members on an enchanting tour featuring remarkable butterflies, tropical beauty, and hand-picked garden destinations. Travel alongside Reiman Gardens' Director of Entomology, Nathan Brockman, and experience nature at its finest.

Costa Rica has been named Destination of the Year by Travel & Leisure, who also hailed it as one of the best vacation destinations in the world!

Dear Members,

Since the inauguration of the Christina Reiman Butterfly Wing in 2002, over 13,000 Blue Morpho (*Morpho peleides*) Butterflies have captivated visitors with their dazzling iridescence. Their brilliant blue hue is so remarkable that pilots flying over Central America have reported sightings of its shimmering flashes. It's no surprise this butterfly has become a favorite amongst those who visit the Butterfly Wing. We are thrilled to offer you the opportunity to witness this majestic species in its native habitat with our upcoming 2025 Reiman Gardens trip to Costa Rica. Home to over 1,200 butterfly species, Costa Rica boasts 90% of Central America's butterfly diversity. During this trip, participants will explore the extraordinary habitats many of these species call home.

What excites me even more as the Gardens' Entomologist, is the chance to visit not one, but two of the butterfly facilities that have supplied our exhibits. These visits will provide a unique glimpse into the operations of the butterfly exhibit industry and an understanding of the breeding side of these amazing creatures.

While I may be "geeking out" over the incredible insects we'll encounter, rest assured plant enthusiasts, there will be an abundance of flora to admire as well. From stunning tropical



See beautiful Blue Morpho butterflies

Monteverde

plants like orchids, bromeliads, and palms to beautifully curated gardens, this trip offers it all. Additionally, we'll have the chance to learn about Costa Rica's agricultural treasures, including coffee, chocolate, and other spices.

This trip promises to delight with a mix of formal gardens and native habitats, showcasing the plants and animals of Costa Rica. Beyond the natural wonders, the experience of a different culture, educational insights, and the warm tropical climate during Iowa's cold winter months will make for an unforgettable journey.

This tour has limited space so don't hesitate to reserve your spot. We look forward to sharing this spectacular experience with you.

Warm regards,

Nathan Brockman

Reiman Gardens Director of Entomology

Nathan Brockman, Director of Entomology at Reiman Gardens, has been a dedicated member of the team for over two decades. He currently serves on the board of directors for the International Association of Butterfly Exhibitors and Suppliers. In November, Nathan will present at the International Conference of Butterfly Exhibitors and Suppliers, sharing insights from the programs he has developed during his tenure at Reiman Gardens.



Discover the unique plants found in Monteverde

This trip is available to Reiman Gardens members* only. To become a member and receive other benefits, visit reimangardens.com/membership or email membership@iastate.edu. (*as per member level, does not include member guests)

Manuel Antonio National Park





REIMAN GARDENS PRESENTS:

Treasures of Costa Rica

JANUARY 4-12, 2025

Immerse Yourself in Costa Rica's Tropical Paradise

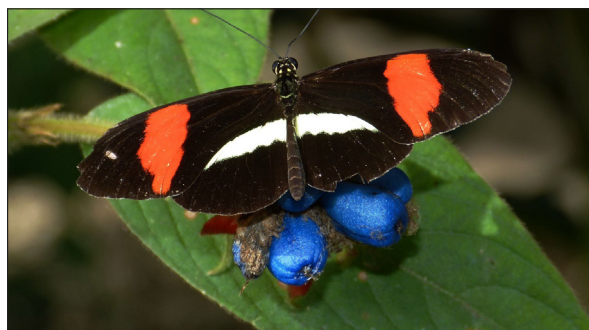
Revel in untouched rainforests, rich coffee, scenic volcanoes, quiet beaches, and brightly colored macaws during this nine-day, exploration of this ruggedly beautiful Central American country. From seeing where Reiman Gardens receives their butterflies from to walking through a cloud-swathed jungle canopy on a suspension bridge, you will see this tropical destination from top to bottom and still want more. Grab your walking shoes, camera, and backpack because this is a trip of a lifetime you won't want to miss!

DAY 1: WELCOME TO COSTA RICA!

Our adventure begins the moment you land at San Jose International Airport and meet your local Costa Rican Guide. Transfer to the hotel and get settled into your room. Later, join the group for a welcome dinner. **D**

DAY 2: POAS VOLCANO/DOKA ESTATE COFFEE/JARDIN BOTANICO ELSE KIENTZLER

Journey to Poas Volcano National Park, which rises over a mile high. The volcano is still active, emitting large amounts of gas and water vapor from the fumaroles. We'll even have a chance to look into its main crater. Next, we travel down the fertile green hills of Poas Volcano which provides a lush backdrop for the Vargas Ruiz family's Doka Coffee Estate. Here we'll learn from an expert about the production, harvesting, roasting, and packaging of the "Golden Bean." Your senses will be stimulated with a visit to the Else Kientzler Botanico Garden. Discover the secrets of the tropics as we explore a wide collection of plants from places like Guyana, New Zealand, Madagascar, Japan, Bahamas, Java, Brazil, India, Korea, and of course, Costa Rica. See heliconias, bromeliads, a collection of tropical fruit trees, succulents, and more! **B, L, D**



DAY 3: BUTTERFLY SUPPLIER/HOT SPRINGS

After breakfast, visit the Costa Rica Entomology Supply (CRES) company. CRES is a leading butterfly farm for exports, exhibits, and souvenirs. Then, we'll visit Ecotermales Hot Springs, which features four impossibly clear, rock-lined pools that vary in temperature from 91 to 105 degrees Fahrenheit. Cradled by the greenery of the rainforest, these pools offer ultimate serenity, complete with a cascading waterfall as background music. Finish your day with a leisurely dinner at the restaurant, once home to the Hidalgo family, before checking into Arenal Paraiso Hotel Resort & Spa. **B, D**



To Reserve Contact Country Travel Discoveries at 262-923-8120

DAY 4: EL BOSQUE NUEVO

El Bosque Nuevo plays a significant role in conservation efforts through its butterfly farm and research center. The farm educates the community on the importance of preserving the forest and promoting sustainable economic activities that harmonize with natural resources. **B, L**

DAY 5: LAKE RIDE/MONTEVERDE SELVATURA PARK

Enjoy a pontoon boat ride across Lake Arenal to the small town of Río Chiquito. From there we'll travel to Monteverde for a guided skywalk tour which brings out the nature-loving adventurer in all of us! Witness the vibrant, lush leaves, abundant tropical fruits, and animals in the rainforest canopy. Suspension bridges make this part of the forest accessible for the first time, bringing us up close and personal with the most colorful and lively (not to mention sunny!) part of the entire forest. Take a break at any of the three towering waterfalls you'll pass on the walk. In addition, see the largest butterfly gardens in Costa Rica and observe more than 14 different species of hummingbirds. **B, L**

DAY 6: CLOUD FOREST RESERVE

We'll spend this morning at the Monteverde Cloud Forest Reserve, one of the most famous conservation areas in Central America and the most well-known cloud forest in the world. Called a cloud forest because of its high altitude, this tropical rainforest experiences almost 100% humidity year-round. Visit to the Jardín de Orquídeas Monteverde, a garden is where you will discover a collection of more than 460 species of orchids. During this guided tour learn about the structure of the plant, its natural habitat, fragrances, and how to take care of the orchids. **B, D**

DAY 7: MANUEL ANTONIO NATIONAL PARK

A trip to Costa Rica wouldn't be complete without seeing a sloth or two! How about capuchin monkeys, raccoons, iguanas, exotic birds, and squirrel monkeys? We have the opportunity to search for these unique species and more as we explore the 1,687 Manuel Antonio National Park on a guided tour. You'll love the beaches, lagoons, and mangroves that add to the park's natural beauty. Enjoy lunch on your own before checking into the deluxe Parador Resort and Spa and enjoying dinner at a local restaurant. **B, D**



DAY 8: SPICE GARDEN TOUR

Experience a fun and informative tour giving you insight on how organic ingredients such as coffee, cacao, and vanilla are grown, processed, and used in local dishes. In the small town of Londres, a member of the farm's team will take us to see the organic garden, experience how coffee is picked and processed, how cacao is turned into chocolate, and navigate spices grown on the ranch such as vanilla, cinnamon, and pepper. Tonight, break bread at a farewell dinner with your traveling companions. **B, L, D**

DAY 9: FAREWELL

After breakfast, transfer to San Jose International Airport to head home relishing in incredible memories from your Costa Rican adventure! **B** 🌍

**REIMAN
GARDENS**
IOWA STATE UNIVERSITY

Poas Volcano



TOUR DETAILS

9 Days • 18 Meals

Jan 4-12, 2025

Price Per Person From

Double: \$4,397; Single: \$5,315

Depart/Return:

Des Moines, IA

HIGHLIGHTS

- Tours of El Bosque Nuevo & CRES Butterfly Operations
- Visit Else Kientzler Botanic Gardens and Orchid Garden
- Explore Manuel Antonio & Poas Volcano National Parks
- Swim in natural Hot Springs

INCLUSIONS

- Roundtrip Airfare from the U.S.
- Professional, English speaking Tour Director
- Welcome Dinner and meals as indicated (B=breakfast, L=lunch, D=dinner)
- Fees and tips for included attractions and meals
- Luggage handling at most hotels
- 24-hour emergency call service

ACCOMMODATIONS

Nights 1-2: Bougainvillea Hotel, San Jose

Nights 3-4: Arenal Paraiso Hotel Resort & Spa, Fortuna

Nights 5-6: Sibú Lodge, Monteverde

Nights 7-8: Parador Resort & Spa, Manuel Antonio

To Reserve Contact Country Travel Discoveries at 262-923-8120

Reiman Gardens | Treasures of Costa Rica | Jan 4-12, 2025

Treasures of Costa Rica

January 4-12, 2025

\$ 4,397 per person based on double occupancy

\$ 5,315 per person based on single occupancy

Mr Mrs Ms Please print:

(Legal name as it appears on your government issued ID)

Date of Birth: _____

Mr Mrs Ms Please print:

(Legal name as it appears on your government issued ID)

Date of Birth: _____

Address _____

City _____

State _____ Zip _____

Mobile Phone _____

Email _____

(If just one name listed above) I will travel as a single.

(If just one name listed above) I will travel as a double, triple or quad occupancy.

My roommate's name (s) are:

A \$250 per person deposit is required to hold your space. Your deposit will be credited against your final payment. Final payment is due 120 days prior to departure. Total fee may be paid at time of deposit if more convenient.

DEPOSIT PAYMENT METHOD

Check enclosed

(Make payable to **Country Travel DISCOVERIES**)

Visa

MasterCard

Discover

Credit Card

□□□□ | □□□□ | □□□□ | □□□□

Exp. Date ____/____ Security Code _____

Signature:

(Required if using credit card)

NOTE: Country Travel DISCOVERIES recommends that all travelers purchase this travel protection plan as it has proven valuable to many of our travelers throughout the years. This plan can be purchased up until final payment date at a rate of 8.5% of your invoice.

For Questions or To Reserve:

Country Travel DISCOVERIES

13416 Watertown Plank Rd

Suite 200

Elm Grove, Wisconsin 53122

855-744-TRIP (8747)

Tour Includes the following:

- Modern transportation as specified in your itinerary
- Quality hotel accommodations
- Entrance fees for attractions described in the itinerary
- Meals as specified in the itinerary
- Luggage handling at most hotels
- Bottled water on motor coach

***Not included:** Gratuities to Tour Director & Motorcoach driver.

Deposit: A \$250 per person deposit is required to confirm your reservation. Your deposit will be credited against your final payment.

Travel Prices: All travel prices are subject to revision in the event of a fluctuation in tariff, currency rates, or other factors beyond our control. In addition, fuel surcharges and departure taxes are subject to revision until time of airline ticketing which is approximately 30 days prior to departure. Every effort has been made to publish accurate pricing. We reserve the right to correct errors.

Cancellation Policy: In the event you need to cancel your reservation, we must receive your cancellation notice in writing, and it will become effective only when received by Country Travel DISCOVERIES (CTD). Refunds will be processed within 15 business days upon receipt of written cancellation. The cancellation fee per person will be determined by the number of days remaining until your tour departure date and are as follows:

121 or more days.....	\$250
120-91 days.....	25% of the tour price
90-61 days	50% of the tour price
60 days or less	No refund

In addition to the cost of the airfare, airline tickets are non-refundable once ticketed. In the event of cancellation by CTD prior to departure, you will receive a full refund of the monies paid, which is processed within 15 business days.

Eligibility & Mobility: To fully enjoy your travel experience, you should be in good physical and mental health. If you have any physical or mental limitations, please advise us of your situation when making your reservation. Travelers who require assistance must be accompanied by an able companion who will provide all necessary assistance, and may not be able to participate in all stops. To be fair to all travelers, we reserve the right to decline or remove anyone whose health or behavior impacts the safety, welfare or enjoyment of the group. Please be aware that there are times when a good deal of walking is involved in our tours. Those who have difficulty walking should consult with their doctors before deciding to travel. Due to the nature of our tours, we are unable to accommodate travelers using mobility devices.

Disclaimer of Liability and Release: Country Travel DISCOVERIES, LLC (CTD) acts as an independent contractor that arranges travel-related services for tour packages. Neither CTD nor their agents or affiliates act as your agent or as an agent for others who provide services in connection with any tour, including, but not limited to, hotels, restaurants, sight-seeing and transportation. These service providers also act as independent contractors. CTD, its agents, direct and indirect owners and affiliates and the tour operators shall not be responsible or liable for any loss, damage, injury, death, delay or inconvenience arising out of or related to any act, omission, negligence, accident, error or default of any company or person engaged in providing such services or any defect in any vehicle or other equipment, and they shall not be responsible or liable for other occurrences and conditions that are beyond their control, including, but not limited to, strikes, theft, weather, acts of terrorism and acts of God.

You agree to defend and indemnify CTD and its agents, owners, affiliates, employees and their successors, and save them harmless from and against any and all liability, damages, costs and expenses, including reasonable attorneys' fees, arising from any act, omission, negligence, accident, error or default of any independent contractor to the fullest extent allowed by law.

You agree to release CTD, its agents, direct and indirect owners and affiliates from all such liability and to look to those who provide services in connection with your tour for recovery of any loss, damage, injury, death, delay or inconvenience. CTD reserves the right to decline or remove any person as a member of a tour and to change the itinerary including accommodations or to withdraw any or all tours or portions thereof. If this is necessary, we will resume the scheduled itinerary as soon as possible. If any tour must be withdrawn by CTD prior to tour departure, liability is limited to a refund of money received by us. Fly My Group, Bozeman, MT and A Closer Look Tours, Glendale, AZ are responsible for certain arrangements on tour. The sole and exclusive responsibility and liability of international airlines shall be in accordance with and limited by the contract carriage in the passenger's tickets and applicable tariffs.

Country Travel Discoveries recommends that travelers purchase a Travel Protection Plan.

Interpretation and Disputes: These Terms are governed by the laws of the United States and the State of Wisconsin, without regard to any conflict of laws and/or provisions. All disputes or causes of action shall be brought exclusively in Waukesha County, Wisconsin with respect to any dispute arising under these Terms, unless otherwise specifically agreed by CTD in its sole discretion. In the event of any dispute, the prevailing party shall be entitled to recovery of its reasonable attorneys' fees and costs. If any provision of these Terms is deemed unenforceable or invalid by a court or arbitrator, then the court or arbitrator shall modify such provision to the minimum extent necessary to make such provision enforceable and valid. Should such modification prove impossible or impracticable, then the provision shall be severed and the remaining terms of these Terms shall be interpreted and read to give them maximum enforceability. Any cause of action or claim must be commenced within one (1) year after the action or claim arises.

Force Majeure: CTD shall not be responsible for, and may make no refund and may pay no damages in the event of cancellation due to Force Majeure, and/or for events beyond its control, such as, without limitation, acts of God, strikes, acts of war, terrorism or civil disturbance, government restrictions, changes of schedules or operational decisions of air carriers, terrorist activity or the threat thereof, industrial action, natural or nuclear activity, epidemic, pandemic, illness, physical injury, quarantine, medical or customs or immigration regulation, delay, or cancellation, adverse weather conditions, fire, or for acts or omission of Third Parties or other parties not under the control of CTD and all similar events outside our control.

Entire Agreement: These Terms constitute the entire agreement between you and CTD with respect to your travel, your reservation and your request for a reservation. These Terms supersede all prior or contemporaneous understandings or agreements, written or oral, regarding such subject matter. Any waiver of any provision of these Terms will be effective only if in writing and signed by CTD. These Terms will inure to the benefit of CTD's successors and assigns. CTD reserves the right to modify these terms and conditions at any time without prior notice to clients.

For Questions or To Reserve:
Country Travel DISCOVERIES
13416 Watertown Plank Rd
Suite 200
Elm Grove, Wisconsin 53122
855-744-TRIP (8747)